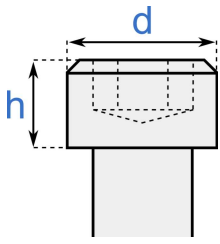
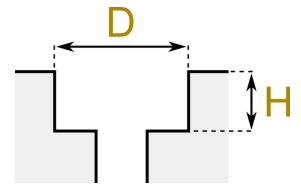


Mechanical dimensions for CAD and 3D printing

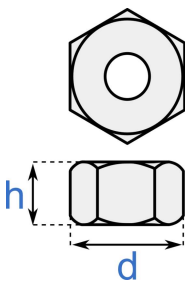
Hex screw



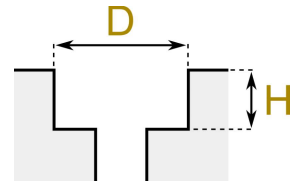
	d	h	D	H
M2	3.3	2	4	3
M3	5.5	3	6.5	4
M4	7	4	8	5
M5	8.5	5	9.5	6
M6	10	6	11	7
M8	13	8	14	9



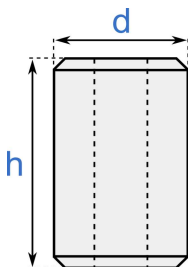
Nut



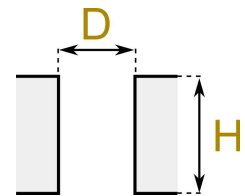
	d	h	D	H
M2	4.4	1.6	4.8	2
M3	6	2.4	6.4	2.5
M4	7.6	3.2	8	3.5
M5	8.8	4.7	9.2	5
M6	11.1	5.2	11.5	5.5
M8	14.4	6.8	14.8	7



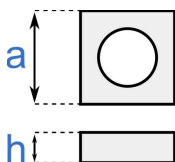
Threaded insert



	d	h	D	H
M3	4.4	5.8	4.2	6
M4	6.1	8.1	5.9	8.3
M5	6.9	9.5	6.7	9.7
M5c	7.3	11.2	7.1	11
M6	8.5	12.7	8.3	12.9



Square nut



	a	h	A	H
M2	4	1.4	4.5	1.9
M3	5.5	1.8	6	2.3
M4	7	2.2	7.5	2.7
M5	8	2.7	9	3.2
M6	10	3.2	11	3.7
M8	13	4	14	4.5

